



TELESCOPING FLAGPOLES

Aluminum Flagpoles Available in Exposed Heights of 15', 20' & 25'

FEATURES

- **Rope & Pulley Free:** No tangles or knots
- **Noise Free:** No clanging ropes

- **Maintenance Free:** No Painting, No Rust
- **Sturdy & Durable:** 16 Gauge Aluminum

STANDARD ACCESSORIES

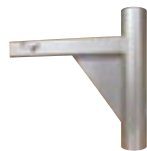
- **Polycarbonate swivel rings:** include a double flag harness for flying two flags
- **Clear polycarbonate pin lock collar:** fits around lowest pole button to prevent unauthorized raising or lowering of the flagpole (collar can be secured with a nut and bolt or a small lock, not included)
- **3" gold anodized aluminum ball:** with 15' and 20' poles (25' pole not supplied with ball ornament, however, we suggest a 4" diameter ball which can be ordered separately.)
- **Heavy duty PVC foundation sleeve**

MODEL	EXP. HT.	BUTT DIA.	TOP DIA.	LBS.	CLEAR ANODIZED			BRONZE ANODIZED			BLACK ANODIZED					
					ITEM #	1-2	3-6	7+	ITEM #	1-2	3-6	7+	ITEM #	1-2	3-6	7+
T16	15'	2-1/4"	1-3/4"	12	320083	\$522	\$505	\$486	320085	\$679	\$660	\$642	320087	\$610	\$592	\$574
T20	20'	2-1/2"	1-3/4"	17	320084	636	616	600	320086	712	694	660	320088	712	694	660
T25	25'	3"	1-3/4"	28	323446	910	850	840	Note: All exposed heights include the ball ornament and are approximate.							



SLEEVE CLAMP

Stainless Steel
Prevents Lifting Pole out of Ground Sleeve



ALUMINUM TRAILER HITCH MOUNT

For Standard 2" Square Reese Receiver Hitches



ALUMINUM SIDE MOUNT

Mounts to any Flat or Round Surface

ITEM #	DESCRIPTION	PRICE	LBS.
320091	FOR 15' POLE	\$58.00	.30
320092	FOR 20' POLE	58.00	.30

ITEM #	DESCRIPTION	PRICE	LBS.
323445	FOR 15* & 20' POLES	\$206.50	5.2

ITEM #	DESCRIPTION	PRICE	LBS.
320095	FOR 15* & 20' POLES	\$250.00	3.3

* For all mounts on this page, additional insert required for T16 pole. Please specify when ordering.



ALUMINUM WHEEL MOUNT

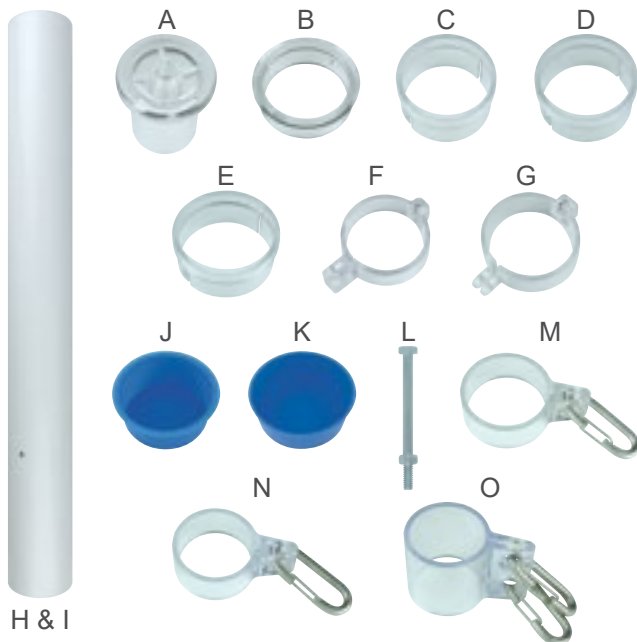
ITEM #	DESCRIPTION	PRICE	LBS.
320093	FOR 15* & 20' POLES	\$259.00	12



ALUMINUM DOCK MOUNT

ITEM #	DESCRIPTION	PRICE	LBS.
320094	FOR 15* & 20' POLES	\$201.00	4.7

TELESCOPING FLAGPOLE REPLACEMENT PARTS



	ITEM #	DESCRIPTION	FOR POLE SIZE	PRICE	LBS.
A	320096	TOP ORNAMENT FITTING	15', 20'	\$15.50	.10
B	320097	TOP STOP RING	15', 20'	9.10	.05
C	320098	SMALL BUSHING	15', 20'	9.10	.05
D	320099	MEDIUM BUSHING	15', 20'	9.10	.05
E	320100	LARGE BUSHING	20'	9.10	.05
F	320101	PIN LOCK	15'	21.80	.05
G	320102	PIN LOCK	20'	21.80	.05
H	320105	FOUNDATION SLEEVE*	15'	36.30	1.4
I	320106	FOUNDATION SLEEVE*	20'	36.30	1.4
J	320107	FOUNDATION SLEEVE CAP	15'	4.60	.02
K	320108	FOUNDATION SLEEVE CAP	20'	4.60	.02
L	320109	FOUNDATION SLEEVE PIN BOLT	15', 20'	8.52	.10
M	320110	TOP FLAG HARNESS	15', 20'	17.60	.15
N	320111	BOTTOM FLAG HARNESS	15', 20'	24.50	.15
O	320112	DOUBLE FLAG HARNESS	15', 20'	27.80	.20

* Sleeve cap & sleeve pin bolt are supplied with foundation sleeve.